



Exhibition Special

This newsletter we're devoting largely to the upcoming exhibition.

It's such an exciting opportunity to share our artworks with the wider community as well as sharing with them what inspires us as artists.

It's quite something to see your painting, print or drawing hung in a wonderful gallery space with lots of passing visitors and potential art collectors dropping in to see them all.

We already have some of your exhibition entries and we hope to see many more over the next few weeks. Remember you can put in up to 3 works and with prizes in several categories the more you put in the more chance you have to win and to sell.

We're filling this edition of the newsletter with information about the awards, framing tips and info about a framing afternoon.

.It's a busy few months coming up!

Happy painting!
Lindy Whitton
President

CAN I ENTER A PAINTING DONE IN CLASS?

You can enter paintings done in class as long as they are based on your own reference material or a photo you have permission to use.

The artwork can not be a copy of your tutor's work and the tutor must not have physically worked on your painting at all.

If you're using a photo from a website like Unsplash, Pexels or Pixabay be aware that others might also be basing their art on the same photo.

We want a diverse collection of works so if two or more artworks are received based on the same reference photo and in the curators opinion are too similar the first entry received at the gallery on collection day will be accepted and any others returned along with the entry fee.

The Colour Circle Inc.

555 Nelson Road,
Mt Nelson,
Tas. 7007

Email: thecolourcircle@gmail.com

Website: thecolourcircleinc.com

Editor

Lindy Whitton

Newsletter contributions

The newsletter is a way we keep in touch with all members, to share your stories, celebrate your achievements and keep you updated on changes.

All contributions are gladly received. Just send in via email or drop in the studio mail box.

INSIDE THIS ISSUE

President's report	1
Mural designs.....	2-3
Store bought frames.....	4-5
Second-hand frame tips.....	6-7
Restoring frame tips.....	8-9
Make your own frame.....	10-11
All the prizes.....	13
Local Framers.....	14
Member profile.....	15
Sitting Roster.....	16-17
Exhibition opportunities.....	18-21

Mural entries and finalists

Thanks to those members who entered in a design for the mural. We were fortunate to have six very different and very original entries and the committee found it difficult to choose three finalists. Voting was secret and the designs were simply labelled A-F so as not to influence the committee members.

The 3 finalist designs selected are by Kristen Hynes, Jenn Cavanagh and Lindy Whitton. They will be displayed at The Long Gallery during the Kaleidoscope exhibition and members and visiting public will be able to vote for their favourite with the design with the most votes being the one that we will upscale to the mural.



Kristen Hynes



Lindy Whitton



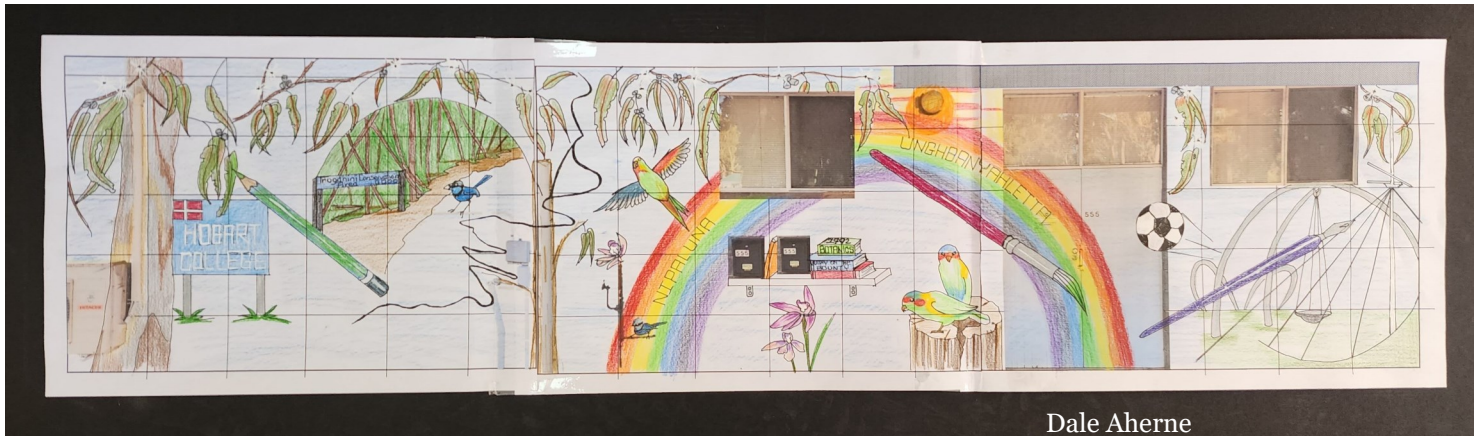
Jenn Cavanagh

Thank you again to each artist who put in so much thought, effort and time to coming up with a design. If you look carefully you can see the many references to local flora, fauna, structures and recreational use surrounding our studio. You might also note how creatively the mailboxes, pipes and other physical structures on the building have been incorporated into the designs.

The diversity of styles and the varied interpretation of the brief is a testament to the creativity of the artists and the culture of The Colour Circle which encourages members to pursue their own interests and develop their own artistic voice.



Trish Lloyd



Dale Aherne



Kerry Andrews

Buying store-bought frames. by Lynne Brown

There's no doubt that finding frames in stores isn't as easy as it used to be, especially if you are looking for bigger sizes. Stores have cut back on their ranges, substituted cheaper materials and items are quite often out of stock, but careful searching can still turn up some good ones.

Shopping online generally isn't an option for glass (e.g. IKEA won't ship glass products) but online

stores like Fantastic Framing can be good for floating framed canvas.

Freedom Furniture

Freedom Furniture used to have an extensive range of frames in a selection of standard sizes but they have cut back substantially, especially in larger sizes. The Ardern range for instance came in a range of sizes and in the popular colours of black, white and pale wood. They have cut back but still have some frames in the store. Watch out though, as the A1 size now has plastic instead of glass, which is just not acceptable in a gallery. Some of their other ranges like Axel and Nile come in smaller sizes and different shapes and do have glass in them. Another source of bigger frames from Freedom is their framed art and prints, especially when they are on sale. Once again, some have glass in them but others are museum-grade plexiglass (which is ok) or plastic (which is not). Check carefully!

Other Stores

Other stores like Myer will sometimes have framed art prints on sale and they can be very good quality frames. Stores like The Importer and Economy Warehouse are worth checking out too with a view to repurposing the frames on the "artwork".

Spotlight still has some frames with glass in them and are worth checking out, especially for smaller sizes. Avoid narrow aluminium/metal photo frames as they are not strong and look nasty.

Kmart frames all seemed to be plastic when I tapped them. They do a great 50 x 40cm stretched canvas in a wood frame though.

Shiploads frames are generally dodgy and will depend on the store but you never know what you

Buying store-bought frames. by Lynne Brown

Some general tips

Start by looking online but then go and check out the frames in the store. Pick them up and feel their weight and tap them to work out if they are glass or plastic. Check the corners are neat and the frame is unchipped. Check the frame composition: look for wood not plastic or metal and make sure they are strong enough. Simple frame profiles and neutral colours will show off your artwork to its best advantage. If you work in standard sizes it will make it easier to find frames to fit.

Fitting your frame

When you have found your forever frame, cut a new mat for your artwork and carefully installed it in the frame, pay extra attention to finishing off the back. Some store-bought frames have metal bits fixed into the backing board for hanging, which you will need to cover up or remove. Putting an extra sheet of white foamcore over the back before you tape it up can be a neat way to smarten up the back.

When you have put on the framing tape, remember to really rub it down really hard, or it can peel off again. Finally, use picture hanging cord or wire and d-ring picture hangers that are strong enough and are firmly screwed into the frame itself. The wire should be tight enough that it does not show above the frame when it is hung.

These are some ideas, but you may have other ones. If you come across something good, please drop us an email and we will share it with others.

Stores to try: Summary

Freedom Furniture - watch out for the A1 size which has plastic not glass

Myer—look for print sales

The Importer—repurpose the “artwork” frames

Economy Warehouse—repurpose the art print frames

Spotlight—good for smaller sizes

Kmart—50x40cm canvas in wood frame but other frames are plastic

Sourcing second hand frames. by Lindy Whitton

Where to find secondhand frames.

The various Tip Shops around Hobart are a great place to find very cheap frames. My favourite is the Mornington Resource Centre because they tend to sort and store their frames in a way that reduces scratches and other damage. Other places are Op Shops, estate sales, Marketplace and Gumtree.

What to look for when browsing second hand frames.

Firstly look for wooden frames, not plastic or manmade materials. Wooden frames are less likely to split when adding screws and screws are less likely to fall out at a later date when the painting has been hanging for awhile.

Choose glass over Plexiglas or plastic. Plexiglas is a valid framing option but will scratch very easily so it's unlikely you will find a Plexiglas frame in good condition. Plastic is plain nasty and should never be used to frame artwork going into an exhibition. If in doubt give it a good tap and you'll soon tell if it's glass or plastic.

Check the corner joints to see if there are chips or misalignments. If they're loose but in good condition you can always repair.

Plain or ornate?

Frames with a simple flat or curved profile are much easier to restore so resist the more ornate frames unless they are in immaculate condition.

Check the frame for scratches and missing bits.

If the frame has deep scratches chances are you will have difficulty getting rid of them so save yourself a headache and pass over these ones. If you have a fabulous frame with a reasonable size chip out of it you may well be able to fill it with a wood filler and then sand and repaint.

Missing glass isn't a problem as it's fairly cheap to have a replacement piece of glass cut to fit.

How to restore the frame.

Unless it's in perfect condition you will need to sand back minor scratches and all paint or stains then repaint or restain. If the corners are loose you may need to take apart and reglue and staple.

What size frame do I need ?

When choosing the size frame you need for an artwork you need to consider a couple of things:

Will you be adding a mat?

Most watercolours , drawings, prints and pastels will have a mat around them to add a little breathing space between the frame and the artwork., although you can frame them unmatted as well. A mat can make the painting look larger and more important.

Oils and acrylics are mostly framed without a mat.



If you opt for a mat how wide will it be?

This is matter of personal preference . Generally the larger the painting the wider the mat . A wider mat can let a painting “breathe”, whilst a very narrow mat can make the painting looked cramped. A good general rule is to make the top and both sides of the mat the same width and the bottom slightly wider.

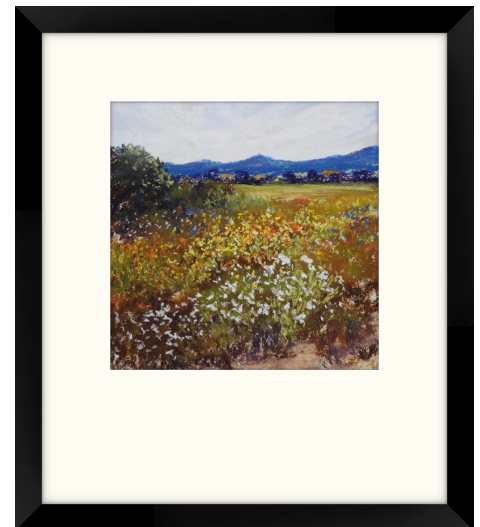


Calculating the frame size

If using a mat ,measure the actual artwork image size and deduct 1cm each side (this area will be covered by the mat) then add the width of the mat on each side. Now you have the internal measurements of your frame. If there is no mat the internal measurements of your frame should be the same as the area of the painting you want to be visible PLUS the width of the frame rebate.

What if I have a frame that doesn't match my artwork size?

This is where a mat can come in useful to help the art sit in a balanced way in the frame. If it doesn't look balanced choose a new frame.



If you're unsure how wide your mat should be or how an artwork will look without a mat a good way to help you visualize it is to use an online app to upload your artwork and digitally mat and frame it. This is one site you can use.

<https://www.frameshop.com.au/>

Removing scratches from glass.

Here are two ways you can try to remove minor scratches in glass:

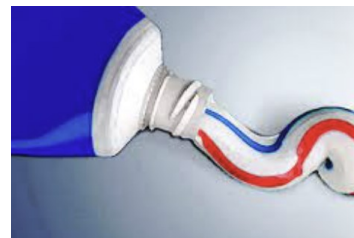
Toothpaste

Place only a small amount of toothpaste on tissue or small amount of cotton.

Make sure the toothpaste is non-abrasive.

Be meticulous when buffing away the scrapes .

Repeat multiple times (especially if the scrapes are deep).



Baking Soda

Combine one spoonful of baking soda with half a spoon of water. This will create a thick paste.

Place the paste on the scratched area and rub it with either some soft cloth or a cotton ball.

Make sure you rub in a circular motion. You should do this for up to 20 seconds.



Filling small holes or scratches in wood .

Beeswax Filler Sticks can be used for repairing cracks and small holes in most wood surfaces. Can be buffed to a fine finish and coated with most materials.

The sticks can be melted a number of ways depending on the application.

Melt with a candle/lighter and drip into the gap needing filling.

Soften in a microwave (test in increments of a few seconds - it just needs to be malleable), then the softened stick can be pushed into the gap.

Chip off the quantity required and melt it into the gap using a heat gun or hairdryer. This needs to be done carefully as the additional heat may affect the surrounding finish.

In all cases scrape back any excess using a plastic spatula or credit card once the wax has firmed up again.



Beeswax Filler Sticks—you can buy from Bunnings or other hardware stores.

Fixing an open mitre corner on a frame.

Sometimes off the shelf frames have a dodgy corner. If there's just a very small gap try rolling the shaft of a screwdriver along each edge of the corner to soften the woodfibres and bend them in slightly to close the gap.

This will only work on tiny gaps.



If you have a bigger gap you can fill with wood filler, then sand back and repaint.



If it's loose and wobbly you will need to remove the v nails on the back to separate the frame and then glue and re nail.

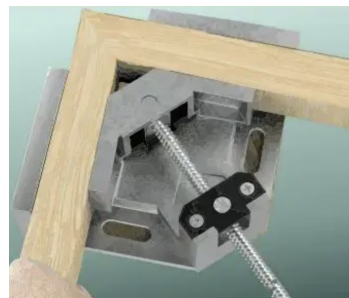
Tapping one side of the frame gently with a rubber mallet can help to work the v nails free.

Once it's apart scrape the old glue off the mitred corners carefully so as not to chip the corners.

Apply a 50/50 mix of water and wood glue to help seal the wood grain.

When it's dry apply a coat of wood glue and clamp the corners together using a framing strap or mitre clamp and let it dry overnight.

Take out of the clamps and either use v nails to further stabilize the corners or use a staple gun to add 2 or 3 staples.



Making your own Frames

It's not that difficult to make your own frames if you have a few items of equipment.

What you will need:

Lengths of framing molding . You will need to have a bit extra than the length of you frame to allow for the mitred corners.

A mitre saw—can be an electric one or you can use a mitre box and handsaw. Whatever you use must give accurate 45 mitre cuts.

Woodworking glue

Corner clamps

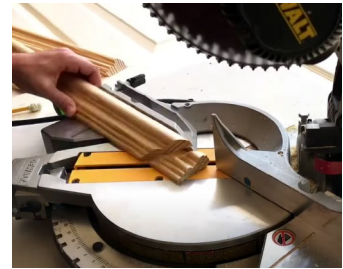
V nails or a staple gun

Measure the molding

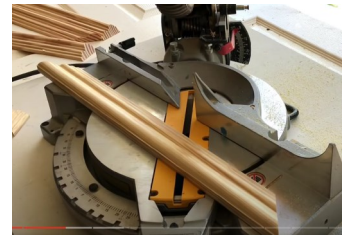
Mark all the measurements should be on the inner edge of the molding because your frame size will be the inner measurements not the outer.

Make 45 degree mitre cuts

Cut a 45 degree mitre on one end of the molding then mark the length of the frame



On the inner edge and make another mitre cut in the opposite direction



Repeat with a second piece using the first cut length to mark the cut lines



Repeat for the 2 shorter sides if making a rectangular frame or continue to cut 2 more the same for a square frame.

Assembling the frame.



Apply a 50/50 mix of water and wood glue to help seal the wood grain on each mitred end of the molding.

When it's dry apply a coat of wood glue and clamp the corners together using a framing strap or mitre clamp and let it dry overnight.

Take out of the clamps and either use v nails to further stabilize the corners or use a staple gun to add 2 or 3 staples.

Graeme Dazeley's framing jigs

If you don't have a mitre box or mitre saw then take a look at just some of the snazzy designs that Graeme Dazeley has come up with. I have one of his mitre framing jigs and it works a charm. He's made over 30 of these now and if you're interested in one just let Graeme know. He'll be happy to show you how they work.



Framing Afternoon

Friday 1st September

1-3pm

Karen Stack and Lindy Whitton

will be available in the studio with mat cutters, mat board, tape and point drivers to help members who need mats cut and fitted to their existing frames.

If you want a mat cut turn up with your frame(s).

If you need help framing your painting bring along the painting and a frame that is at least 5 cm larger each side for a matted painting, or exactly the same size for an unmatted painting.

There is no workshop fee but you will need to sign up via email and pay for the cost of the mat board and tape (which will be much cheaper than getting it cut at a framers.)



All the prizes!

The following awards will be chosen by People's Choice and announced at the closing ceremony on Tuesday 10th October at 1pm. We would like to thank our sponsors for their generous support.

The Dave Elliott Memorial Award for Best in Show

\$500 Cash

Kindly donated by our Vice President Katie Brett

Oil/Acrylic Award

\$200 Voucher

Adart



Watercolour Award

\$200 Voucher

Senior art Supplies



Pastel Award

\$200 Cash

Soft Pastels Australia



Dry Media

\$200 Voucher

Artery



These awards will be chosen by the curators and announced at the opening ceremony on Thursday 5th October at 6:30—7:30pm

The Hangers Award

\$200 Cash

The Colour Circle

Highly Commended

One years membership to
The Colour Circle

Local framers

Framer	Address	Comments	Price
Phil's Framing	1640 Channel Hwy, Margate	Good turn around times. Mat and foamcore packs at a reasonable price to fit standard frame sizes.	Mid range. Order mat/foamcore packs with some lead time.
Louise McMullen	29 Sirius St, Howrah	Professional Quick turn around . Laser cut mats Works from her home studio so call for an appointment	Very reasonable compared to city framers.
Artery	Collins St, Hobart	Great framing. Appointment only	At the expensive end.
Full Gamut	Harrington St, Hobart	Excellent service. Also have ready made frames.	Mid range
Luke Wagner	65 Argyle St, Hobart	Excellent framing	Expensive

DON'T forget to get your entries in. You can enter easily via the website or pick up a paper entry at the studio. You can also print out the entry form attached to this newsletter.

Committee Member Spotlight

Jenn Cavanagh

I'd heard about the Colour Circle many years ago, (you'd have to pay me to find out how many) as a friend had enthused about it. Retirement provided the ideal opportunity to check out classes, and I've been hooked ever since. It's a real delight to spend a few hours each week learning about watercolours. Each tutor brings something new, and have all been informative and encouraging.

When I paint I can't think about anything else. My whole focus is on composition, colour, technique and mood. I'm fascinated by light, particularly how light enhances the mood of a painting. I'm currently experimenting with soft and hard edges, and how this helps to focus the human gaze. It's such fun!

The best part, however, are the chats about art. The most used phrase is "I don't know what I'm doing!" Does that matter? Not at all. We share our 'happy accidents', and celebrate when our results exceed our expectations. Each person has something unique to offer.

I was asked to consider coming onto the committee, and as a new member, have been warmly welcomed. My job is to update what's happening on Facebook.

I'm looking forward to the Kaleidoscope Exhibition in October. Now, just have to choose a painting which reflects what I've learnt. Mmmm! Something where light plays a part...



Studio Housekeeping

You may have noticed that there has been a new heat pump installed. Please remember to check it's turned off at the ends of each session.

The disabled toilet had another blockage recently with sewage spilling up into the storeroom from the drain. If you notice any problems with the plumbing please call the number on the inside of the disabled toilet to organise a plumber to come and fix it. Once you call them please let one of the committee know. Committee contact details are on the noticeboard.

You may also have noticed that the rubbish bins are now being housed in the corner inside the studio. This is to prevent the general public filling them and leaving no room for us. It also means that they won't block the mural once it's been painted.

51

How can you help?

Sitting at the gallery

We will need a number of members to volunteer to sit at the gallery over the 5 and a half days the exhibition is open.

If you are available please let us know as soon as possible by emailing thecolourcircle@gmail.com with your :

Name

Preferred session (please choose at least 2 in case your first preference is already taken)

Contact phone number

If you would like to sit with a friend please note that as well

You can also add your name to the list on the studio noticeboard if that's more convenient.

Don't worry if you've never done this before. There will be a committee member on duty as well to deal with any unexpected difficulties and there will be clear written instructions for you to follow .

This is a great way to meet the public and talk about The Colour Circle and the artwork on display. People love to meet artists!

Handing out flyers

Flyers will be available in the studio at the beginning of September so if you have a local café, library or corner shop that is willing to display some flyers please take a stack and lets get the word out!

Accepting artwork on hand in day

We will need some volunteers on hand in day Wednesday 4th October from 8.45 -11am .

There will be a clear system and sign in sheets and there will be members manning the sign in tables, checking artwork for labels and any existing damage to frames, and placing artwork around the walls for the curators to start planning the hanging.

Collection afternoon volunteers

Collection will follow the award ceremony. Between 1 and 4 pm on Tuesday 10th we will need runners to take art down from the walls, members to check out the art and volunteers to remove the hanging wires .

Please contact The Exhibition Subcommittee at thecolourcircle@gmail.com to volunteer

SITTING ROSTER

Sitting Roster - Kaleidoscope Art Connections Exhibition 2023 The Long Gallery

DATE	Morning	Afternoon	Contact number
Thursday 5th Oct	10am-1pm	1-4pm	
Person 1			
Person 2			
Committee member			
Friday 6th Oct			
Person 1			
Person 2			
Committee member			
Saturday 7th Oct			
Person 1			
Person 2			
Person 3			
Committee member			
Sunday 8th Oct			
Person 1			
Person 2			
Person 3			
Committee member			
Monday 9th Oct			
Person 1			
Person 2			
Committee member			
Tuesday 10th Oct			
Person 1		xxxxxxx	
Person 2		xxxxxxx	
Committee member			

Exhibition Opportunities

Artery Art on Show

ENTRY FEES

\$15.00 – first entry

\$10.00 – subsequent entries (Maximum 3 entries)

Online entries: <http://entries.hobartshowground.com.au>

Mail: The Royal Agricultural Society of Tasmania

PO Box 94,
Glenorchy TAS 7010

Hand deliver entry form to:

The Royal Agricultural Society of Tasmania
Hobart Showground - Admin Office
2 Howard Road, Glenorchy

IMPORTANT DATES

Entry closing date: COB Tuesday 3rd October 2023

Artwork delivery days (City Hall):

Thursday 19th October 2pm - 5pm, Friday 20th October 9am - 1pm, Saturday 21st October 9am - 12noon

Artwork collection date (City Hall): Sunday 29th October 1pm - 5pm & Monday 30th October 10am – 4pm

PAYMENT OPTIONS:

Pay by cheque made out to RAST or pay cash at the office

Direct deposit to RAST : BSB: 017209 Account Number: 836724957

Please put your surname followed by ART as the reference.

Or by Credit Card—Mastercard or Visa, put details on the entry form

ENQUIRIES: Phone: 03 6272 6812

Email: admin@hobartshowground.com.au

Web: www.hobartshowground.com.au



Your locally owned community
art supplier and picture framer
for over 45 years.

info@arterydirect.com.au

arterydirect.com.au

137 Collins Street, Hobart

(03) 62343788

Exhibition Opportunities

Artery Art on Show

AWARDS & PRIZE MONEY

OVERALL WINNER \$1,400.00 prize money
Sponsored by Artery

RUNNER UP \$600 prize money. Sponsored by Artery.
(The Overall winner and Runner up will be selected from the section A to D entries .)

The ARTERY EMERGING ARTIST AWARD \$1000 prize money

Open to young artists aged between 15 and 20
This award is intended to assist aspiring young artists in the furtherance of their artistic endeavours.
The award will be judged on participants submitted artwork together with their statement of intent.

The MARGARET GUNN PERPETUAL TROPHY \$500 prize money

This perpetual trophy is awarded to a quiet achiever by the Gunn family.
A quiet achiever is an artist who has supported the RAST exhibitions and made a significant contribution to the Tasmanian arts community quietly and without fuss.

RAST AWARD \$500.00 prize money sponsored by the RAST

This award is for an entry that best depicts an agricultural theme. It will be selected from all sections

PORTRAIT PRIZE \$500.00 prize money sponsored by Artery

(Portraits across any medium to be considered for this prize)

PEOPLE'S CHOICE AWARD \$250.00 prize money sponsored by the RAST

(To be decided by votes from the viewing public)

SECTION A - Work in Oil and/or Acrylic

(includes mixed media which is predominately oil or acrylic)

- **1st Place \$500.00** Artery Voucher
- **2nd Place \$250.00** Artery Voucher

SECTION B - Work in Water Media

(includes, watercolour, gouache, mixed media which is predominately water media)

- **1st Place \$500.00** Artery Voucher
- **2nd Place \$250.00** Artery Voucher

SECTION C - Drawing and other media

(includes ink, pencil, pastel, charcoal, printmaking and any other media)

- **1st Place \$500.00** Artery Voucher
- **2nd Place \$250.00** Artery Voucher

SECTION D - Miniatures

- **1st Place \$500.00** Artery Voucher
- **2nd Place \$250.00** prize money sponsored by the RAST

SECTION E—Photography

- Photography can include manipulated digital imagery.
- **1st Place \$350.00** Print and frame services voucher from Full Gamut
- **2nd place \$150.00** Print and frame services voucher from Full Gamut

Sponsored by:



Exhibition Opportunities

The Art Society of Tasmania 139th ANNUAL EXHIBITION 2023



ENTRY FORM and CONDITIONS of ENTRY

The Art Society of Tasmania's Annual exhibition is the highlight of our year.

This is a judged exhibition without a theme. It is an opportunity to show the depth and breadth of talent of our membership. The exhibition will be held in the LONG GALLERY, Salamanca Place, from 8 –17 September.

Exhibiting members are invited to enter 1 or 2 works completed in the last year.

Please select your best works that are a credit to you and your fellow members as there is no pre-selection.

Enter **on-line**: www.artstas.com.au - under the Exhibition menu heading,
or by **post** to Art Society of Tasmania Inc, PO Box 403 Lenah Valley, Tas, 7008.

Entries open Tuesday 1st August

Entries, including entry fee, to be received by

Sunday 27th August 2023

Prize winners will be chosen by independent judges.

Artery Award for the Best Overall Work - \$1000 voucher from Artery.

Best Use of Medium - \$500 cheque from The Art Society of Tasmania.

Highly Commended - \$200 voucher from Phil's Framing.

Highly Commended - \$200 cheque from Lauder & Howard Antiques & Fine Art.

Highly Commended - \$200 voucher from Just Frames.

Highly Commended - \$200 voucher from Wagner Framemakers.

Highly Commended - \$200 voucher from ARC Framerite.

People's Choice Prize - \$250 voucher from Adart.

Exhibition Opportunities

If you love dogs and painting animals why not enter this years Poochibald ?



Be inspired by dogs of all kinds – celebrity dogs, childhood pals or that trusty chonk keeping your toes warm on the couch right now. What says *I love you* more than an award winning portrait? (...maybe some liver treats...) Go on then! What are you waiting for!?

Featuring both an adult and two junior sections, there are great prizes.

Winners will be announced at the exhibition opening on Thursday 28th September at 5.30pm at the Schoolhouse Gallery.

The exhibition runs from 29th Sept – 22nd October 11am – 5pm Wed – Sun.

Prizes are:

Adult 1st prize \$300 voucher, runner up \$150 voucher

Children – Junior (up to 12yrs) 1st prize \$100 voucher, runner up \$50 voucher

Children – Senior (12 – 16 yrs.) 1st prize \$100 voucher, runner up \$50 voucher

Ways to enter:

- Download form below and print out at home
- Pick up a form from the Schoolhouse Gallery or Clarence Council offices

Request a form to be sent to you in the mail by contacting the team Ph 6217 9607 or schoolhouse@ccc.tas.gov.au

All entries must have an entry form attached to the reverse.

KALEIDOSCOPE

The Colour Circle Members Exhibition 4th-10th October 2023

CONDITIONS OF ENTRY

1. Colour Circle Tutors and current financial Colour Circle members are invited to exhibit at this exhibition. Current Colour Circle members **ONLY** are eligible for exhibition prizes in the following categories.
 - Overall
 - Watercolour
 - Pastel
 - Oil / Acrylics
 - Dry medium: Drawing, Printing,

All prizes awarded are by People's Choice voting. Highly commended certificates will be awarded and judged by Lindy Whitton and Lynne Brown during hanging on Wednesday 4th October.

All presented works must be the original work of the exhibitor. The work done by a tutor is the original, if then copied by the class the resulting works are not original. If the work is then repeated after the class, the work is still not original. Demonstrated techniques and verbal direction by a tutor in class may be used by individuals to complete their own work. This work is regarded as original for the purpose of this exhibition.

It is the exhibitors responsibility to ensure they have permission from the owner to use source material.

2. Entries are not valid without a completed entry form with payment of entry fee received by the closing date 14th September.
3. All works should be completed within the last 2 years. Each artist can exhibit a maximum of three framed or canvas works. Works of any size will be accepted.
4. **Entry Fee of \$15 for first framed work. Entry Fee is \$10 for second and third framed work.** Non-refundable and paid at the time of submission of entry form.
5. There is a **15% commission from sales of all works.** Please allow for this commission cost when pricing your individual works.
6. Included is a sheet for exhibition information. Cut out and secure information to the back of each exhibiting piece of work.
7. All artwork is to be mounted, suitably framed and ready to hang with D rings and picture framing wire.
8. Some "not for sale" works (NFS) will be accepted.

9. Exhibitors acknowledge that while all care is taken with works, neither the Salamanca Art Society or The Colour Circle are liable for any damage sustained to the work and exhibiting is undertaken at the exhibitors own risk.

10. METHOD OF ENTRY:

Entry can be done on Try Booking through The Colour Circle website

Entry forms to be Emailed to: thecolourcircle@gmail.com

Posted to the Studio: Exhibition. The Colour Circle Inc. 555 Nelson Rd, Mt Nelson 7007 or posted in the box in the studio.

Payment can be made by Direct Deposit (preferred method)

BANK DETAILS: Colour Circle Bendigo Bank. BSB:633000 ACCOUNT: 163753353

by cheque made out to The Colour Circle Inc. or by cash.

Dates to remember:

Wednesday 4th October

9am – 11am Hand in works

11am – 5pm Hanging

Thursday 5th October

10am – 4pm open to the public

6.30pm – 7.30pm exhibition official opening

Friday 6th – Monday 9th October

10am – 4pm open to the public

Tuesday 10th October

10am – 1pm open to the public

1pm – 3pm Pick up works



CONTACT PERSON: DALE. Mobile: 0418438589

Enquiries via email to: thecolourcircle@gmail.com

ENTRY FORM



KALEIDOSCOPE 4th – 10th OCTOBER 2023

Entry form due with payment by 14th September 2023 online or placed in Exhibition box in studio.

Name: _____

Address: _____

Phone: _____

Email: _____

For Sale Transfer: Bank details BSB _____ Account number _____ OR Pay ID _____

Please provide details of the works you wish to exhibit. First framed work \$15 entry fee, second and third framed work \$10.

ITEM	TITLE	PRICE	MEDIUM
1.	Framed or canvas \$15 entry fee. Name of work:		
2.	Framed or canvas \$10 entry fee. Name of work:		
3.	Framed or canvas \$10 entry fee. Name of work:		

NB: 15% commission on all works sold

Contact person: Dale. Mobile: 0418438589

ARTWORK LABEL attach to back of artwork (Top Right Corner)

TITLE:

MEDIUM:

ARTIST:

PRICE:

